

**RayBio<sup>®</sup> Cell-Based**

**Human/Mouse/Rat PHOSPHOTYROSINE (Activated) Phosphorylation ELISA Kit**

For the semi-quantitative detection of phosphorylated human, mouse, or rat PHOSPHOTYROSINE (Activated) in adherent whole cell lines.

## **User Manual (Revised May 13, 2016)**

Cat#: CBEL-TYROSINE-1 (1 plate kit)

Cat#: CBEL-TYROSINE-2 (2 plate kit)

Cat#: CBEL-TYROSINE-5 (5 plate kit)

5 plate kit = 3 total boxes (2 x 2 plate kits & 1 x 1 plate kit)

Please read manual carefully  
before starting experiment





## Cell-Based Human/Mouse/Rat PHOSPHOTYROSINE (Activated) ELISA Kit

---

### TABLE OF CONTENTS

I. Introduction.....	2
II. How It Works.....	3
III. Reagents and Storage.....	4
IV. Additional Reagents Required.....	4
V. Reagent Preparation .....	5
VI. Assay Procedure .....	6
VII. Assay Procedure Summary .....	8
VIII. Quality Control Data .....	9
IX. References .....	11
X. Troubleshooting Guide .....	12

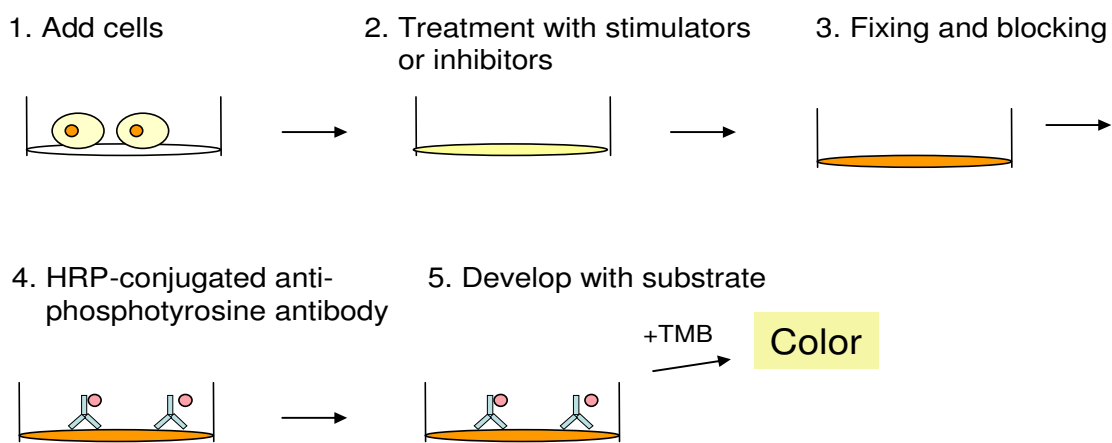
## I. INTRODUCTION

Protein phosphorylation is instrumental in the regulation of protein activity within a cell. It plays important roles in the living cells including proliferation, differentiation and metabolism. A large number of protein kinases and phosphatases have been extensively investigated, and have been shown to be involved in signal transduction pathways.

The RayBio® Cell-Based Human/Mouse/Rat Cell-Based Phosphotyrosine (Activated) ELISA kit is a very rapid, convenient and sensitive assay kit that can monitor the activation or function of important biological pathways in cells. It can be used for measuring the relative amount of Phosphotyrosine and screen the effects of various treatments, inhibitors (such as siRNA or chemicals), or activators in cultured human, mouse and rat cell lines. By determining Phosphotyrosine protein in your experimental model system, you can verify pathway activation in your cell line without spending excess time and effort in preparing cell lysate and performing an analysis of Western Blot. In the Cell-Based Phosphotyrosine ELISA kit, cells are seeded into a 96 well tissue culture plate. The cells are fixed after various treatments, inhibitors or activators. After blocking, HRP-Anti-Phosphotyrosine is pipetted into the wells and incubated. The wells are washed, a TMB substrate solution is added to the wells and color develops in proportion to the amount of protein. The Stop Solution changes the color from blue to yellow, and the intensity of the color is measured at 450 nm.

See Figure 1 below for an illustration.

## II. HOW IT WORKS



**Fig.1. Cell-Based protein phosphorylation procedure**

### III. REAGENTS AND STORAGE

Store entire kit at  $\leq -20^{\circ}\text{C}$  immediately upon arrival. Kit must be used within the 6 month expiration date. Avoid repeated freeze-thaw cycles.

ITEM	COMPONENT	1 PLATE KIT	2 PLATE KIT	STORAGE AFTER INITIAL THAW*
A	Uncoated 96-Well Microplate	1 plate	2 plates	Room Temperature
B	20X Wash Buffer A Concentrate	1 vial (30 ml)		2-8°C
C	20X Wash Buffer B Concentrate	1 vial (30 ml)		
D-1	Fixing Solution	1 vial (30 ml)		
E	30X Quenching Buffer Concentrate	1 vial (2 ml)		
F	5X Blocking Buffer Concentrate	1 vial (20 ml)		2-8°C(1 month)
G	2000X HRP Conjugated Anti-phospho (Activated) PHOSPHOTYROSINE Concentrate	1 vial (7 $\mu\text{l}$ )	2 vials (7 $\mu\text{l}$ /ea)	-20°C
J	TMB Substrate	1 vial (12 ml)	2 vials (12 ml/ea)	2-8°C
K	Stop Solution**	1 vial (14 ml)		

\*For up to 3 months (unless otherwise stated) or until expiration date.

\*\*Contains 0.2 M Sulfuric Acid

### IV. ADDITIONAL MATERIALS REQUIRED

1. A model cell line, protein tyrosine kinase inhibitors, growth factors or cytokines
2. Microplate reader capable of measuring absorbance at 450 nm
3. 37°C incubator
4. Precision pipettes to deliver 2  $\mu\text{l}$  to 1 ml volumes
5. Adjustable 1-25 ml pipettes for reagent preparation
6. 100 ml and 1 liter graduated cylinders
7. Absorbent paper
8. Distilled or deionized water
9. Orbital shaker or oscillating rocker

## V. REAGENT PREPARATION

**NOTE:** Thaw all reagents to room temperature immediately before use. If wash buffers contain visible crystals, warm to room temperature and mix gently until dissolved.

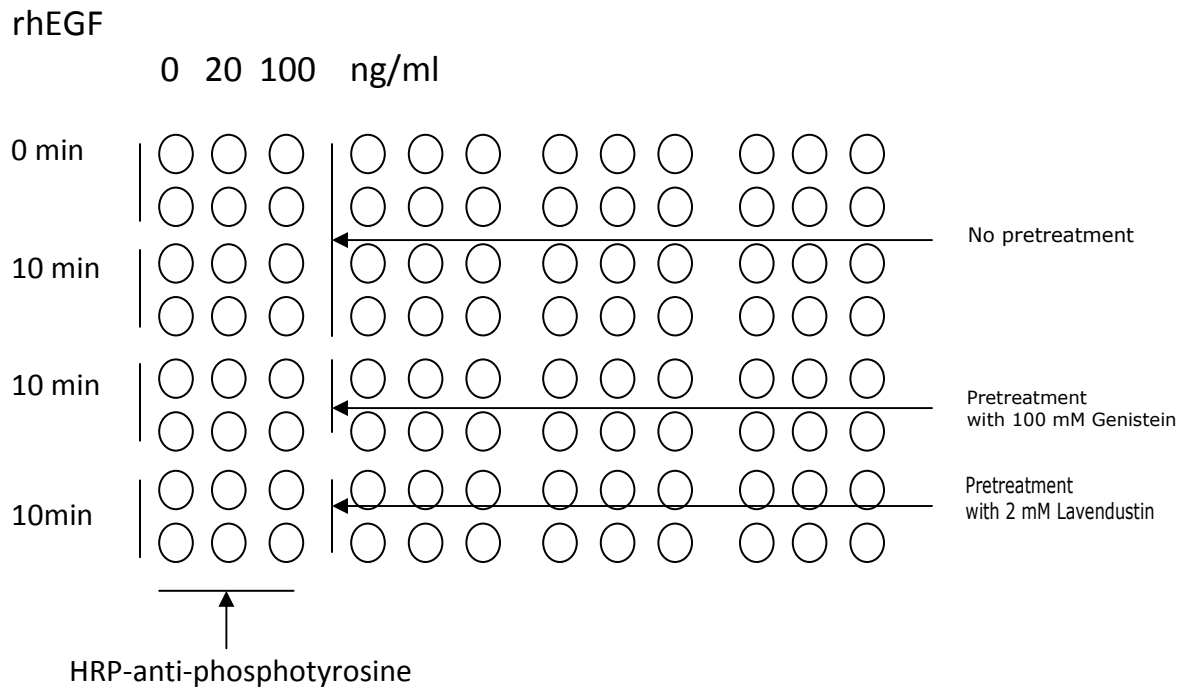
**NOTE:** Briefly centrifuge (~1,000g) ITEM G before opening to ensure maximum recovery.

ITEM	COMPONENT	PREPARATION	EXAMPLE	
A	Uncoated 96-Well Microplate	No Preparation	N/A	
B	20X Wash Buffer A Concentrate	Dilute 20-fold with distilled or deionized water	25 ml of concentrate + 475 ml of water = 500 ml of 1X working solution	
C	20X Wash Buffer B Concentrate			
D-1	Fixing Solution	No Preparation	N/A	
E	30X Quenching Buffer Concentrate	Dilute 30-fold with 1X Wash Buffer A	1 ml of concentrate + 29 ml of wash buffer = 30 ml of 1X working solution	
F	5X Blocking Buffer Concentrate	Dilute 5-fold with distilled or deionized water	15 ml of concentrate + 60 ml of water = 75 ml of 1X working solution	
PRIMARY ANTIBODY	G	2000X HRP Conjugated Anti-phospho (Activated) PHOSPHOTYROSINE Concentrate	Dilute 2000-fold with 1X Blocking Buffer	5 µl of concentrate + 9995 µl of 1X Blocking Buffer = 10 ml of 1X working solution
	J	TMB Substrate	No Preparation	N/A
	K	Stop Solution		

## VI. ASSAY PROCEDURE:

**NOTE:** ALL incubations and wash steps must be performed under gentle rocking or rotation (~1-2 cycles/sec).

1. Design your experiment. For example, see Figure 2 below.



**Fig. 2. Example of plate layout for RayBio® cell-based assay**

**OPTIONAL:** If seeding HUVECs, HMEC-1 or other loosely attached cells, coat the Uncoated 96-Well Microplate (ITEM A) by adding 100  $\mu$ l poly-L-Lysine (Recommended Sigma Aldrich, Cat#: P4832) into each well and then follow manufacturer's instructions. A pre-coated CellBIND® microplate or other poly-lysine treated tissue culture plate may be used in place of Item A.

2. Seed 100  $\mu$ l of 10,000 to 30,000 cells into each well of the Uncoated 96-Well Microplate (ITEM A) provided and incubate overnight at 37°C with 5% CO<sub>2</sub>.

**NOTE:** *The optimal cell number used will vary on the cell line and the relative amount of protein phosphorylation. More or less cells may be used but this must be determined empirically.*

**NOTE:** *The cells can be starved ~4-24 hours (depending on cell line) prior to treatment with inhibitors or activators.*

3. Apply various treatments, inhibitors (such as siRNA or chemicals) or activators according to manufacturer's instructions and incubate for the desired time points.

**NOTE:** *It is recommended to dissolve inhibitors or activators into serum-free cell culture medium before treating the cells (unless otherwise stated in the manufacturer's instructions.)*

4. Discard the cell culture medium by flipping the microplate upside down and **gently** tapping the bottom of the microplate over a sink.

5. Wash by pipetting 200  $\mu$ l of the **prepared 1X** Wash Buffer A (ITEM B) into each well. Discard the wash buffer (same as step 4) and wash 2 more times for a total of 3 washes using fresh wash buffer each time. After the final wash, gently blot the microplate onto a paper towel to remove any excess/remaining buffer.

**NOTE:** *To avoid cell loss, do not pipette directly onto the cells. Instead, gently dispense the liquid down the wall of cell culture wells. Also avoid the use of vacuum suction or too forcefully tapping the microplate when discarding any solution.*

6. Add 100  $\mu$ l of Fixing Solution (ITEM D-1) into each well and incubate for 20 minutes at room temperature.

**NOTE:** *The fixing solution is used to permeabilize the cells.*

7. Repeat wash step 5.

8. Add 200  $\mu$ l of the **prepared 1X** Quenching Buffer (ITEM E) into each well and incubate 20 minutes at room temperature.



**NOTE:** *The quenching buffer is used to minimize the background response.*

9. Wash **4** times with 1X Wash Buffer A.

10. Add 200  $\mu$ l of the **prepared 1X** Blocking Buffer (ITEM F) into each well and incubate for 1 hour at 37°C.

11. Wash **3** times with the **prepared 1X** Wash Buffer B (ITEM C).

**NOTE:** *If needed, the microplate may be stored at -80°C for several days after this wash.*

12. Add 100  $\mu$ l of the **prepared 1X** primary antibody (ITEM G) into each corresponding well and incubate for 1 hour at room temperature.

13. Wash **4** times with 1X Wash Buffer B.

14. Add 100  $\mu$ l of the TMB Substrate (ITEM J) into each well and incubate for 30 minutes at room temperature **in the dark**.

15. Add 50  $\mu$ l of the Stop Solution (ITEM K) into each well. Read at 450 nm immediately.

## VII. ASSAY PROCEDURE SUMMARY

1. Seed 10,000 to 30,000 cells into each well and incubate overnight.



2. Apply various treatment, inhibitors or activators according to manufacturer's instructions.



3. Add 100  $\mu$ l of Fixing Solution into each well and incubate for 20 minutes at room temperature.



4. Add 200  $\mu$ l of prepared 1X Quenching Buffer and incubate for 20 minutes at room temperature.



5. Add 200  $\mu$ l of prepared 1X Blocking Buffer and incubate for 1 hour at 37°C.



6. Add 100  $\mu$ l of prepared 1X primary antibody to each well and incubate for 1 hour at room temperature.



7. Add 100  $\mu$ l TMB Substrate and incubate 30 minutes at room temperature.



9. Add 50  $\mu$ l Stop Solution to each well. Read at 450 nm immediately.

## VIII. QUALITY CONTROL DATA

### Representative results:

1. Seeded 10,000 A431 cells into appropriate wells of the microplate. Cells were incubated at 37°C in 5% CO<sub>2</sub> overnight.
2. The cells were starved overnight before treatment (inhibitor or activator).
3. The cells were treated for 30 min with 50 µl of 100 mM Genistein or 2 mM Lavendustin in appropriate wells at room temperature prior to EGF stimulation.
4. Added 50 µl of different concentrations of stimulators (rhEGF concentration for A431 cells: 0, 20 or 100 ng/ml in serum free DMEM) to appropriate wells (shown below). Then incubated for 10, 20, or 30 min at 37°C.
5. Discarded the solution and wash 3 times with 1X Wash Buffer A (200 µl each) immediately. Then flipped the plate upside down and tapped to remove all of excess wash buffer. The protocol was then followed as stated.

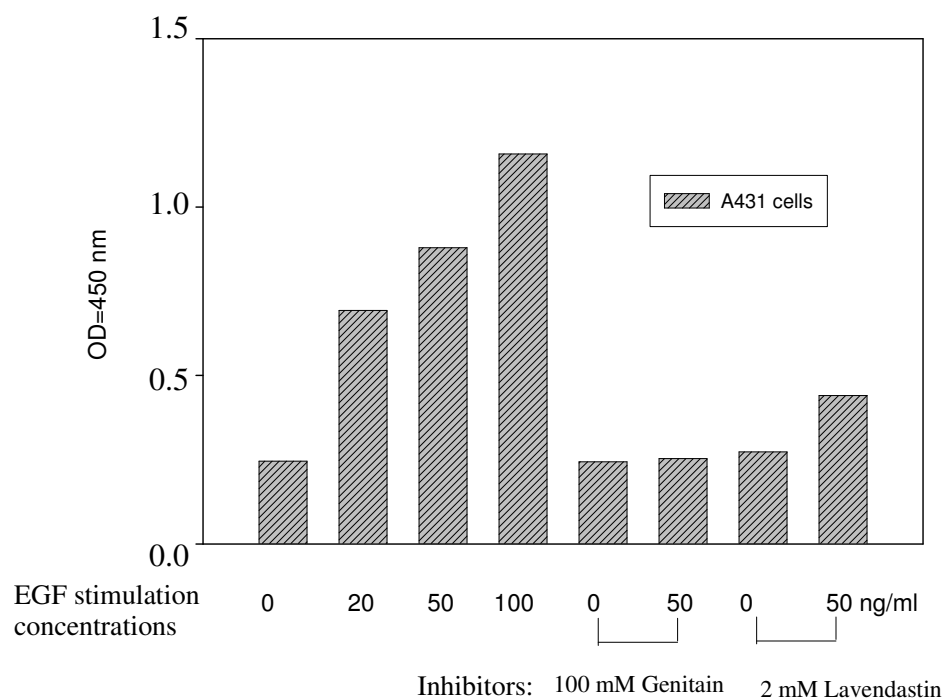


Fig 3. A431 cells were treated for 30 min with 50  $\mu$ l of 100 mM Genistein or 2 mM Lavendustin in appropriate wells at room temperature prior to EGF stimulation. Added 50  $\mu$ l different concentrations of rhEGF (0, 20, 50 or 100 ng/ml in serum free DMEM) to appropriate wells. Then incubated for 10 min at 37°C.

## IX. REFERENCES

1. Gingras, M.-C., et al. 2002 *Mol. Cell Biol.* 22:41-56.
2. Ruff-Jamison, S., et al. 1991 *J. Biol. Chem.* 266:6607.
3. Maile, L. A., and Clemmons, D. R. 2002 *J. Biol. Chem.* 277:8955-8960.

## X: TROUBLESHOOTING GUIDE

<b>Problem</b>	<b>Cause</b>	<b>Solution</b>
1. Low signal	1. Improper storage of the ELISA kit	1. Store the kit according to manual instructions. Keep substrate solution in dark.
	2. Improper dilution	2. Ensure correct preparation of antibody and reagents.
	3. Cells drop off from the wells	3. Some of treatments may make cells drop off the wells. Reduce inhibitor or activator concentration.
2. High background	1. Inadequate washing	1. Be sure to remove all of washing solution and follow the recommendation for washing.
	2. Too much cells	2. Reduce the cell number.
3. Large CV	1. Inaccurate pipetting	1. Check pipette.
	2. Remaining wash buffer in the well	2. Remove all of wash buffer.
	3. Cells drop off from the wells	3. Please don't directly face the cells with tips when adding reagents or wash buffer.

This product is for research use only.



*©2016 RayBiotech, Inc.*