

# RayBio<sup>®</sup> Human DCLK1 ELISA Kit

Catalog #: ELH-DCLK1

User Manual  
Last revised June 14, 2021

Caution:  
Extraordinarily useful information enclosed



ISO 13485 Certified

3607 Parkway Lane, Suite 100  
Norcross, GA 30092

Tel: 1-888-494-8555 (Toll Free) or 770-729-2992, Fax: 770-206-2393  
Web: [www.RayBiotech.com](http://www.RayBiotech.com), Email: [info@raybiotech.com](mailto:info@raybiotech.com)



RayBiotech, Inc.

---

## RayBio<sup>®</sup> Human DCLK1 ELISA Kit Protocol

### Table of Contents

| Section |                               | Page # |
|---------|-------------------------------|--------|
| I.      | Introduction                  | 3      |
| II.     | Storage                       | 4      |
| III.    | Reagents                      | 4      |
| IV.     | Additional Materials Required | 4      |
| V.      | Reagent Preparation           | 5      |
| VI.     | Assay Procedure               | 6      |
| VII.    | Assay Procedure Summary       | 7      |
| VIII.   | Calculation of Results        | 8      |
|         | A. Typical Data               | 8      |
|         | B. Sensitivity                | 8      |
|         | C. Spiking & Recovery         | 9      |
|         | D. Linearity                  | 9      |
|         | E. Reproducibility            | 10     |
| IX.     | Specificity                   | 10     |
| X.      | Troubleshooting Guide         | 11     |

Please read the entire manual carefully before starting your experiment

## I. INTRODUCTION

The RayBio<sup>®</sup> Human DCLK1 ELISA (Enzyme-Linked Immunosorbent Assay) kit is an in vitro enzyme-linked immunosorbent assay for the quantitative measurement of human DCLK1 in serum (human DCLK1 concentration is pretty low in normal serum/plasma, it may not be detected in this assay), plasma (collect plasma using EDTA or Citrate as an anticoagulant. Heparin is not recommended in this assay), and cell culture supernatants. This assay employs an antibody specific for human DCLK1 coated on a 96-well plate. Standards and samples are pipetted into the wells and DCLK1 present in a sample is bound to the wells by the immobilized antibody. The wells are washed and biotinylated anti-human DCLK1 antibody is added. After washing away unbound biotinylated antibody, HRP-conjugated streptavidin is pipetted to the wells. The wells are again washed, a TMB substrate solution is added to the wells and color develops in proportion to the amount of DCLK1 bound. The Stop Solution changes the color from blue to yellow, and the intensity of the color is measured at 450 nm.

Need your results faster? Try RayBiotech's *SpeedELISA* platform for quantitative detection in just three hours.

<https://www.raybiotech.com/speedelisa-kits/>

Short on sample, or need higher sensitivity? Check out the IQELISA<sup>™</sup> Immuno-PCR platform.

<https://www.raybiotech.com/immuno-pcr/>

## II. STORAGE

The entire kit may be stored at -20°C for up to 1 year from the date of shipment. Avoid repeated freeze-thaw cycles. The kit may be stored at 4°C for up to 6 months. For extended storage, it is recommended to store at -80°C. For prepared reagent storage, see table below.

## III. REAGENTS

| Component                               | Size / Description  | Storage / Stability After Preparation |
|---|---|---------------------------------------|
| DCLK1 Microplate (Item A)               | 96 wells (12 strips x 8 wells) coated with anti-Human DCLK1.                                | 1 month at 4°C*                       |
| Wash Buffer Concentrate (20X) (Item B)  | 25 ml of 20X concentrated solution.   | 1 month at 4°C                        |
| Standard Protein (Item C)               | 2 vials of Human DCLK1. 1 vial is enough to run each standard in duplicate.                 | 1 week at -80°C                       |
| Detection Antibody DCLK1 (Item F)       | 2 vials of biotinylated anti-Human DCLK1. Each vial is enough to assay half the microplate. | 5 days at 4°C                         |
| HRP-Streptavidin Concentrate (Item G)   | 200 µl 1000X concentrated HRP-conjugated streptavidin.                                      | Do not store and reuse.               |
| TMB One-Step Substrate Reagent (Item H) | 12 ml of 3,3,5,5'-tetramethylbenzidine (TMB) in buffer solution.                            | N/A                                   |
| Stop Solution (Item I)                  | 8 ml of 0.2 M sulfuric acid.  | N/A                                   |
| Assay Diluent D (Item K)                | 15 ml of 5X concentrated buffer.  | 1 month at 4°C                        |
| Assay Diluent B (Item E)                | 15 ml of 5X concentrated buffer.  | 1 month at 4°C                        |

\*Return unused wells to the pouch containing desiccant pack, reseal along entire edge.

## IV. ADDITIONAL MATERIALS REQUIRED

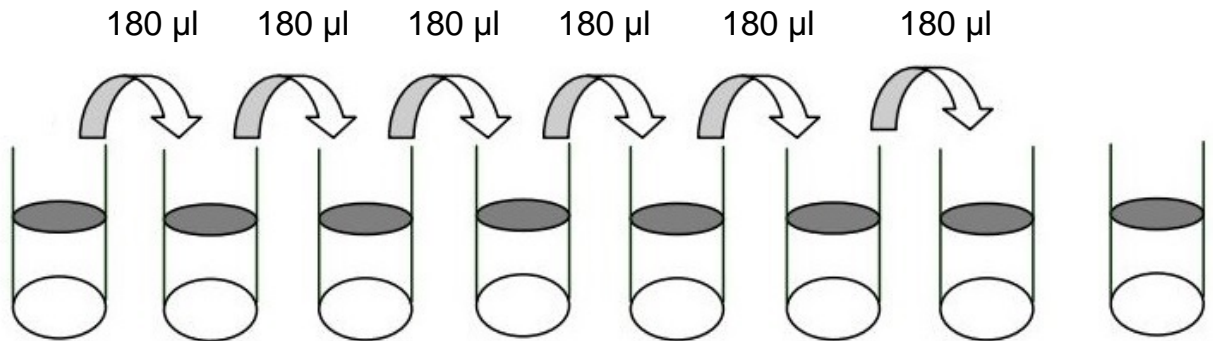
1. Microplate reader capable of measuring absorbance at 450 nm.
2. Precision pipettes to deliver 2 µl to 1 ml volumes.
3. Adjustable 1-25 ml pipettes for reagent preparation.
4. 100 ml and 1 liter graduated cylinders.
5. Absorbent paper.
6. Distilled or deionized water.
7. Log-log graph paper or computer and software for ELISA data analysis.
8. Tubes to prepare standard or sample dilutions.

## V. REAGENT PREPARATION

1. Bring all reagents and samples to room temperature (18 - 25°C) before use.
2. Assay Diluent D (Item K) and Assay Diluent B (Item E) should be diluted 5-fold with deionized or distilled water before use.
3. Sample dilution: The suggested dilution for normal serum/plasma is 2 fold.

**Note:** Levels of DCLK1 may vary between different samples. Optimal dilution factors for each sample must be determined by the investigator.

4. Preparation of standard: Briefly spin a vial of Item C. Add 400  $\mu$ l 1X Assay Diluent D (Item K, Assay Diluent D should be diluted 5-fold with deionized or distilled water before use) into Item C vial to prepare a 150 ng/ml standard solution. Dissolve the powder thoroughly by a gentle mix. Pipette 270  $\mu$ l 1X Assay Diluent D into each tube. Use the 150 ng/ml standard solution to produce a dilution series (shown below). Mix each tube thoroughly before the next transfer. 1X Assay Diluent D serves as the zero standard (0 ng/ml).



|                       | Std1                 | Std2        | Std3        | Std4        | Std5        | Std6        | Std7        | Zero Standard |
|-----------------------|----------------------|-------------|-------------|-------------|-------------|-------------|-------------|---------------|
| <b>Diluent volume</b> | Item C + 400 $\mu$ l | 270 $\mu$ l | 270 $\mu$ l | 270 $\mu$ l | 270 $\mu$ l | 270 $\mu$ l | 270 $\mu$ l | 270 $\mu$ l   |
| <b>Conc.</b>          | 150 ng/ml            | 60 ng/ml    | 24 ng/ml    | 9.600 ng/ml | 3.840 ng/ml | 1.536 ng/ml | 0.614 ng/ml | 0 ng/ml       |

5. If the Wash Concentrate (20X) (Item B) contains visible crystals, warm to room temperature and mix gently until dissolved. Dilute 20 ml of Wash Buffer Concentrate into deionized or distilled water to yield 400 ml of 1X Wash Buffer.
6. Briefly spin the Detection Antibody vial (Item F) before use. Add 100  $\mu$ l of 1X Assay Diluent B (Item E) into the vial to prepare a detection antibody concentrate. Pipette up and down to mix gently (the concentrate can be stored at 4°C for 5 days). The detection antibody concentrate should be diluted 80-fold with 1X Assay Diluent B (Item E) and used in step 5 of Part VI Assay Procedure.
7. Briefly spin the HRP-Streptavidin concentrate vial (Item G) and pipette up and down to mix gently before use, as precipitates may form during storage. HRP-Streptavidin concentrate should be diluted 1000-fold with 1X Assay Diluent B (Item E).

For example: Briefly spin the vial (Item G) and pipette up and down to mix gently. Add 10  $\mu$ l of HRP-Streptavidin concentrate into a tube with 10 ml 1X Assay Diluent B to prepare a 1000-fold diluted HRP-Streptavidin solution (don't store the diluted solution for next day use). Mix well.

## **VI. ASSAY PROCEDURE**

1. Bring all reagents and samples to room temperature (18 - 25°C) before use. It is recommended that all standards and samples be run at least in duplicate.
2. Label removable 8-well strips as appropriate for your experiment.
3. Add 100  $\mu$ l of each standard (see Reagent Preparation step 3) and sample into appropriate wells. Cover wells and incubate for 2.5 hours at room temperature with gentle shaking.
4. Discard the solution and wash 4 times with 1X Wash Solution. Wash by filling each well with Wash Buffer (300  $\mu$ l) using a multi-channel Pipette or autowasher. Complete removal of liquid at each step is essential to good performance. After the last wash, remove any remaining Wash Buffer by aspirating or decanting. Invert the plate and blot it against clean paper towels.
5. Add 100  $\mu$ l of 1X prepared biotinylated antibody (Reagent Preparation step 6) to each well. Incubate for 1 hour at room temperature with gentle shaking.
6. Discard the solution. Repeat the wash as in step 4.
7. Add 100  $\mu$ l of prepared Streptavidin solution (see Reagent Preparation step 7) to each well. Incubate for 45 minutes at room temperature with gentle shaking.

8. Discard the solution. Repeat the wash as in step 4.
9. Add 100  $\mu$ l of TMB One-Step Substrate Reagent (Item H) to each well. Incubate for 30 minutes at room temperature in the dark with gentle shaking.
10. Add 50  $\mu$ l of Stop Solution (Item I) to each well. Read at 450 nm immediately.

## **VII. ASSAY PROCEDURE SUMMARY**

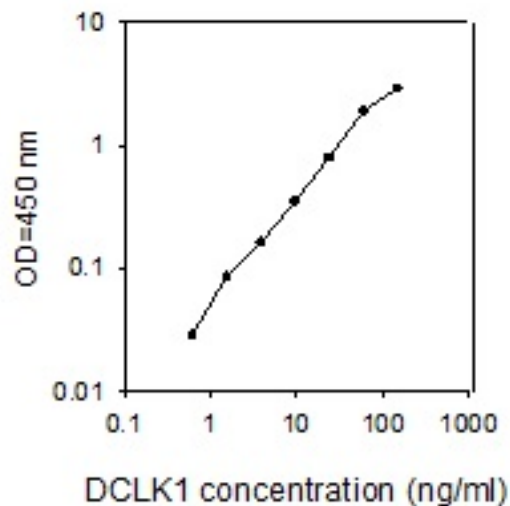
1. Prepare all reagents, samples and standards as instructed.
2. Add 100  $\mu$ l standard or sample to each well. Incubate 2.5 hours at room temperature.
3. Add 100  $\mu$ l prepared biotin antibody to each well. Incubate 1 hour at room temperature.
4. Add 100  $\mu$ l prepared Streptavidin solution. Incubate 45 minutes at room temperature.
5. Add 100  $\mu$ l TMB One-Step Substrate Reagent to each well. Incubate 30 minutes at room temperature.
6. Add 50  $\mu$ l Stop Solution to each well. Read at 450 nm immediately.

## VIII. CALCULATION OF RESULTS

Calculate the mean absorbance for each set of duplicate standards, controls and samples, and subtract the average zero standard optical density. Plot the standard curve on log-log graph paper or using Sigma plot software, with standard concentration on the x-axis and absorbance on the y-axis. Draw the best-fit straight line through the standard points.

### A. TYPICAL DATA

These standard curves are for demonstration only. A standard curve must be run with each assay.



### B. SENSITIVITY

The minimum detectable dose of Human DCLK1 was determined to be 0.6 ng/ml.

Minimum detectable dose is defined as the analyte concentration resulting in an absorbance that is 2 standard deviations higher than that of the blank (diluent buffer).



### C. SPIKING & RECOVERY

Recovery was determined by spiking various levels of Human DCLK1 into the sample types listed below. Mean recoveries are as follows:

| Sample Type        | Average % Recovery | Range (%) |
|--------------------|--------------------|-----------|
| Serum              | 124.3              | 111-139   |
| Plasma             | 90.46              | 75-108    |
| Cell culture media | 116.0              | 105-128   |

### D. LINEARITY

| Sample Type |                       | Serum   | Plasma  | Cell Culture Media |
|-------------|-----------------------|---------|---------|--------------------|
| 1:2         | Average % of Expected | 124.6   | 131.7   | 126.8              |
|             | Range (%)             | 122-127 | 123-136 | 121-133            |
| 1:4         | Average % of Expected | 109.1   | 129.5   | 92.02              |
|             | Range (%)             | 101-117 | 124-135 | 83-101             |

## **E. REPRODUCIBILITY**

Intra-Assay CV%: <10%

Inter-Assay CV%: <12%

## **IX. SPECIFICITY**

This ELISA antibody pair detects DCLK1. Other species not determined.

## X. TROUBLESHOOTING GUIDE

| Problem             | Cause  | Solution  |
|---------------------|--|---|
| Poor standard curve | <ul style="list-style-type: none"> <li>• Inaccurate pipetting</li> <li>• Improper standard dilution</li> </ul>   | <ul style="list-style-type: none"> <li>• Check pipettes</li> <li>• Briefly centrifuge Item C and dissolve the powder thoroughly by gently mixing</li> </ul>   |
| Low signal          | <ul style="list-style-type: none"> <li>• Improper preparation of standard and/or biotinylated antibody</li> <li>• Too brief incubation times</li> <li>• Inadequate reagent volumes or improper dilution</li> </ul> | <ul style="list-style-type: none"> <li>• Briefly spin down vials before opening. Dissolve the powder thoroughly.</li> <li>• Ensure sufficient incubation time. Assay procedure step 3 may be done overnight at 4°C with gentle shaking (note: may increase overall signals including background).</li> <li>• Check pipettes and ensure correct preparation</li> </ul> |
| Large CV            | <ul style="list-style-type: none"> <li>• Inaccurate pipetting</li> <li>• Air bubbles in wells</li> </ul>   | <ul style="list-style-type: none"> <li>• Check pipettes</li> <li>• Remove bubbles in wells</li> </ul>   |
| High background     | <ul style="list-style-type: none"> <li>• Plate is insufficiently washed</li> <li>• Contaminated wash buffer</li> </ul>   | <ul style="list-style-type: none"> <li>• Review the manual for proper wash. If using a plate washer, ensure that all ports are unobstructed.</li> <li>• Make fresh wash buffer</li> </ul>   |
| Low sensitivity     | <ul style="list-style-type: none"> <li>• Improper storage of the ELISA kit</li> <li>• Stop solution</li> </ul>   | <ul style="list-style-type: none"> <li>• Store your standard at &lt;-70°C after reconstitution, others at 4°C. Keep substrate solution protected from light.</li> <li>• Add stop solution to each well before reading plate</li> </ul>  |

# RayBio<sup>®</sup> ELISA Kits

---

Over 4,000 ELISA kits available, visit [www.RayBiotech.com/ELISA-Kits](http://www.RayBiotech.com/ELISA-Kits) for details.

This product is for research use only.



©2020 RayBiotech, Inc