

Catalog Number: **230-00022**

Recombinant Dog Can f1**Source**

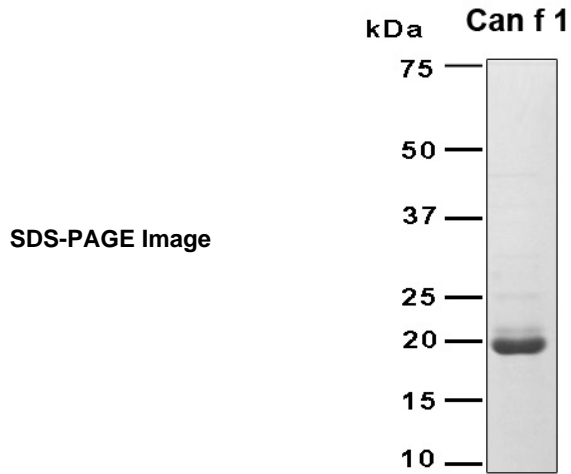
Species	Canis lupus familiaris
Accession Number	O18873
Gene Symbol	CAN F1
Gene ID	403830
Expressed Region	Gln19-Gln174
Synonyms	Major allergen Can f 1, Allergen=Can f 1

Preparation

Expression System	E.Coli
Tag	N-terminal 6x histidine tag
Purification	His-tag affinity purification by immobilized metal ion affinity chromatography (IMAC)
Purity	> 90%
Purity Determined By	SDS-PAGE under reducing conditions and visualized by Coomassie blue staining
Molecular Weight	19.5

Protein Specifications

Format	Liquid
Formulation	Supplied as a 0.2 um filtered solution in PBS (pH 7.4).
Concentration	Lot specific (see the label on the vial)
Preservative	None
Endotoxin Level	Not determined
Recommended Applications	ELISA, EIA, Western Blotting, Dot Blotting, Immunoprecipitation, Protein Array



Shipping

Ice packs

Storage/Stability

Upon arrival, the protein may be stored for 2 weeks at 4 °C. For long term storage, it is recommended to store at -20 °C or -80 °C in appropriate aliquots. Avoid repeated freeze-thaw cycles.

This product is furnished for **LABORATORY RESEARCH USE ONLY**.

Not for diagnostic or therapeutic use.