

Catalog Number: 230-00060

Recombinant Prunus Persica (Peach) Pru p 1**Source**

Species	Prunus persica
Accession Number	Q2I6V8
Gene Symbol	Pru p 1
Expressed Region	Gly2-Asn160
Synonyms	Pru p 1, Major allergen Pru p 1, Pathogenesis related protein PR10.

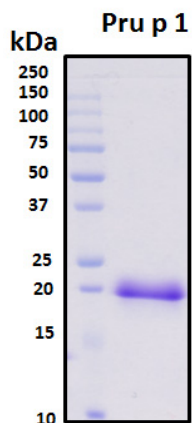
Preparation

Expression System	E.Coli
Tag	N-terminal histidine tag
Purification	His-tag affinity purification by immobilized metal ion affinity chromatography (IMAC)
Purity	>95%
Purity Determined By	SDS-PAGE under reducing conditions and visualized by Coomassie blue staining
Molecular Weight	18

Protein Specifications

Format	Lyophilized powder
Formulation	Lyophilized from a 0.45 ?m filtered solution in 1x PBS (pH 7.4).
Concentration	Determined by Pierce BCA protein assay kit
Recommended Applications	Protein-protein Interaction, Post-translational Modifications, ELISA, EIA, Western Blotting, Dot Blotting, Immunoprecipitation, Protein Array, etc.

SDS-PAGE Image



Shipping

Ice packs

Storage/Stability

Upon arrival, the lyophilized protein may be stored for 2 weeks at 4°C. For long term storage, it is recommended to store desiccated below -20 °C in a manual defrost freezer. Following reconstitution, the protein may be stored for 2 weeks under sterile conditions at -20 °C. For long term storage, it is recommended to make appropriate aliquots and store at -80 °C. Avoid repeated freeze-thaw cycles.

This product is furnished for LABORATORY RESEARCH USE ONLY.

Not for diagnostic or therapeutic use.