

Catalog Number: 230-00525

Recombinant Bla g 6 allergen protein

Source

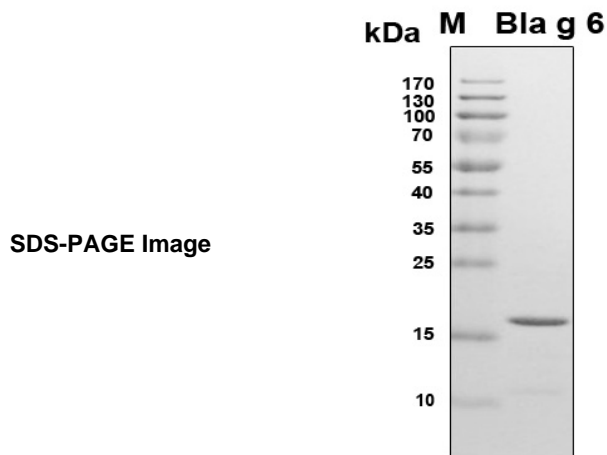
Species	Blattella germanica (German cockroach)
Accession Number	Q1A7B3
Gene Symbol	BLA G 6
Expressed Region	Asp2-Glu151
Synonyms	Bla g 6

Preparation

Expression System	E.Coli
Tag	N-terminal 6x histidine tag
Purification	His-tag affinity purification by immobilized metal ion affinity chromatography (IMAC)
Purity	> 95%
Molecular Weight	17.2

Protein Specifications

Format	Liquid
Formulation	Supplied as a 0.2 um filtered solution in PBS with 20% glycerol (pH 7.4).
Concentration	Lot specific (see the label on the vial)
Preservative	None
Endotoxin Level	Not determined
Recommended Applications	ELISA, EIA, Western Blotting, Dot Blotting, Immunoprecipitation, Protein Array



Shipping

Ice packs

Storage/Stability

Upon arrival, the protein may be stored for 2 weeks at 4 °C. For long term storage, it is recommended to store at -20 °C or -80 °C in appropriate aliquots. Avoid repeated freeze-thaw cycles.

This product is furnished for LABORATORY RESEARCH USE ONLY.

Not for diagnostic or therapeutic use.