

Catalog Number: 230-00537

Recombinant Cte f 1 allergen protein**Source**

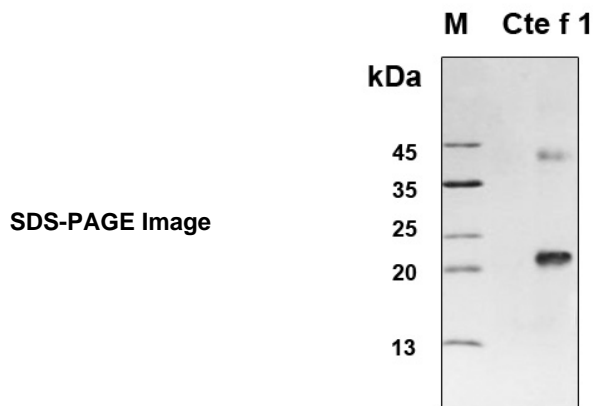
Species	Ctenocephalides felis (Cat flea)
Accession Number	Q94424
Expressed Region	Glu19-Lys176
Synonyms	Cte f 1, Salivary antigen 1

Preparation

Expression System	E.Coli
Tag	N-terminal 6x histidine tag
Purification	His-tag affinity purification by immobilized metal ion affinity chromatography (IMAC)
Purity	> 85%
Purity Determined By	SDS-PAGE under reducing conditions and visualized by Coomassie blue staining
Molecular Weight	18

Protein Specifications

Format	Liquid
Formulation	Supplied as a 0.2 um filtered solution in 20 mM NaH ₂ PO ₄ (pH 8.0), 0.5 M NaCl, 10 mM imidazole, 8 M urea, 1 mM DTT.
Concentration	Lot specific (see the label on the vial)
Preservative	None
Endotoxin Level	Not determined



Shipping

Ice packs

Storage/Stability

Upon arrival, the protein may be stored for 2 weeks at 4 °C. For long term storage, it is recommended to store at -20 °C or -80 °C in appropriate aliquots. Avoid repeated freeze-thaw cycles.

This product is furnished for LABORATORY RESEARCH USE ONLY.

Not for diagnostic or therapeutic use.