

Catalog Number: **230-00626**

---

**Recombinant Human IL-1 alpha****Source**

|                         |                      |
|-------------------------|----------------------|
| <b>Species</b>          | Human                |
| <b>Accession Number</b> | P01583               |
| <b>Gene Symbol</b>      | IL1A                 |
| <b>Gene ID</b>          | 3552                 |
| <b>Expressed Region</b> | Ser113-Ala271        |
| <b>Synonyms</b>         | Interleukin 1, alpha |

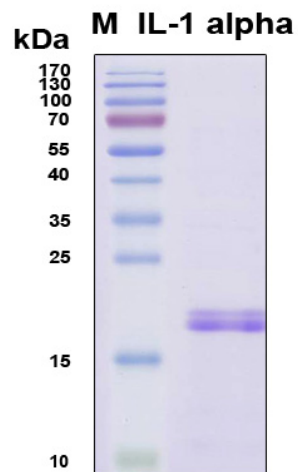
**Preparation**

|                             |   |
|-----------------------------|---|
| <b>Expression System</b>    | E.Coli  |
| <b>Tag</b>                  | N-terminal 6x histidine tag   |
| <b>Purification</b>         | His-tag affinity purification by immobilized metal ion affinity chromatography (IMAC) |
| <b>Purity</b>               | > 90%   |
| <b>Purity Determined By</b> | SDS-PAGE under reducing conditions and visualized by Coomassie blue staining          |
| <b>Molecular Weight</b>     | 20.3  |

**Protein Specifications**

|                        |  |
|------------------------|--|
| <b>Format</b>          | Liquid   |
| <b>Formulation</b>     | Supplied as a 0.2 um filtered solution in 20 mM NaH <sub>2</sub> PO <sub>4</sub> (pH 8.0), 0.5 M NaCl, 700 mM imidazole, 6 M urea. |
| <b>Concentration</b>   | Lot specific (see the label on the vial)   |
| <b>Preservative</b>    | None   |
| <b>Endotoxin Level</b> | Not determined   |

SDS-PAGE Image



## Shipping

Ice packs

## Storage/Stability

Upon arrival, the protein may be stored for 2 weeks at 4 °C. For long term storage, it is recommended to store at -20 °C or -80 °C in appropriate aliquots. Avoid repeated freeze-thaw cycles.

This product is furnished for LABORATORY RESEARCH USE ONLY.

Not for diagnostic or therapeutic use.