

Catalog Number: 230-00678

---

**Recombinant Human CTGF****Source**

<b>Species</b>	Human
<b>Accession Number</b>	P29279
<b>Gene Symbol</b>	CTGF
<b>Gene ID</b>	1490
<b>Expressed Region</b>	Gln27-Ala349
<b>Synonyms</b>	Connective Tissue Growth Factor, IGFBP-8, Hypertrophic Chondrocyte-Specific Protein 24, IGFBP8, Insulin-Like Growth Factor-Binding Protein 8, CCN Family Member 2, CCN2, IGF-Binding Protein 8, HCS24, NOV2, IBP-8

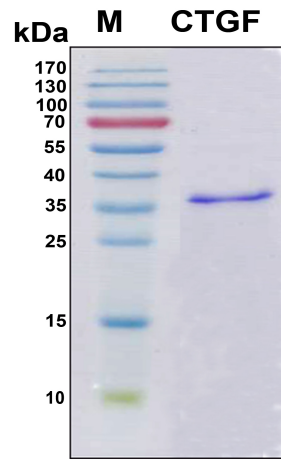
**Preparation**

<b>Expression System</b>	E.Coli
<b>Tag</b>	N-terminal 6x histidine tag
<b>Purification</b>	His-tag affinity purification by immobilized metal ion affinity chromatography (IMAC)
<b>Purity</b>	> 95%
<b>Purity Determined By</b>	SDS-PAGE under reducing conditions and visualized by Coomassie blue staining
<b>Molecular Weight</b>	37.7

**Protein Specifications**

<b>Format</b>	Liquid
<b>Formulation</b>	Supplied as a 0.45 um filtered solution in 100 mM NaH <sub>2</sub> PO <sub>4</sub> (pH 7.4), 0.3 M NaCl, 927 mM imidazole, 8 M urea.
<b>Concentration</b>	Lot specific (see the label on the vial)
<b>Preservative</b>	None
<b>Endotoxin Level</b>	Not determined

SDS-PAGE Image



## Shipping

Ice packs

## Storage/Stability

Upon arrival, the protein may be stored for 2 weeks at 4 °C. For long term storage, it is recommended to store at -20 °C or -80 °C in appropriate aliquots. Avoid repeated freeze-thaw cycles.

This product is furnished for LABORATORY RESEARCH USE ONLY.

Not for diagnostic or therapeutic use.