

Catalog Number: 230-00735

---

**Recombinant mouse LIF****Source**

<b>Species</b>	Mouse
<b>Accession Number</b>	P09056
<b>Gene Symbol</b>	LIF
<b>Gene ID</b>	16878
<b>Expressed Region</b>	Ser24-Phe203
<b>Synonyms</b>	Leukemia Inhibitory Factor, HILDA, Differentiation Inhibitory Activity, Cholinergic Differentiation Factor, Differentiation-Stimulating Factor, Hepatocyte-Stimulating Factor III, Differentiation-Inducing Factor, Melanoma-Derived LPL Inhibitor, Human Interleukin In DA Cells, D Factor, MLPLI, Emfilermin, CDF, DIA

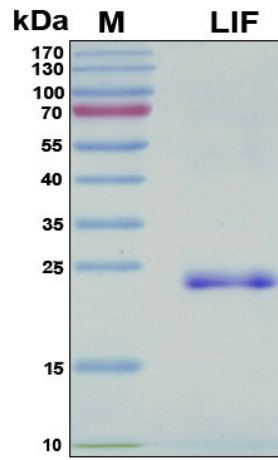
**Preparation**

<b>Expression System</b>	E.Coli
<b>Tag</b>	N-terminal 6x histidine tag
<b>Purification</b>	His-tag affinity purification by immobilized metal ion affinity chromatography (IMAC)
<b>Purity</b>	> 90%
<b>Purity Determined By</b>	SDS-PAGE under reducing conditions and visualized by Coomassie blue staining
<b>Molecular Weight</b>	22

**Protein Specifications**

<b>Format</b>	Liquid
<b>Formulation</b>	Supplied as a 0.45 um filtered solution in 50 mM NaH <sub>2</sub> PO <sub>4</sub> (pH7.4), 0.3 M NaCl, 150 mM imidazole, 6 M urea.
<b>Concentration</b>	Lot specific (see the label on the vial), determined by Bio-Rad protein assay dye reagent concentrate.
<b>Preservative</b>	None
<b>Endotoxin Level</b>	Not determined

SDS-PAGE Image



## Shipping

Ice packs

## Storage/Stability

Upon arrival, the protein may be stored for 2 weeks at 4 °C. For long term storage, it is recommended to store at -20 °C or -80 °C in appropriate aliquots. Avoid repeated freeze-thaw cycles.

This product is furnished for **LABORATORY RESEARCH USE ONLY**.

Not for diagnostic or therapeutic use.