

Catalog Number: 230-00841

---

**Recombinant Human GSC-2****Source**

<b>Species</b>	Human
<b>Accession Number</b>	O15499
<b>Gene Symbol</b>	GSC2
<b>Expressed Region</b>	Ala2-Cys205
<b>Synonyms</b>	GSC-2, Homeobox protein goosecoid-2, GSC-2, GSC-L, GSCL, Homeobox Protein Goosecoid-Like, Goosecoid-Like

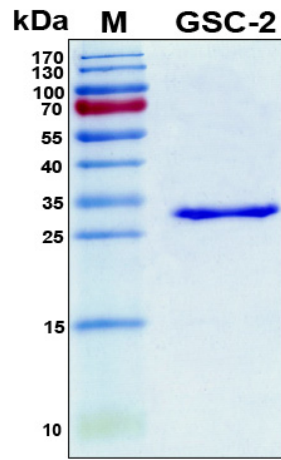
**Preparation**

<b>Expression System</b>	E.Coli
<b>Tag</b>	N-terminal 6x histidine tag
<b>Purification</b>	His-tag affinity purification by immobilized metal ion affinity chromatography (IMAC)
<b>Purity</b>	>95%
<b>Purity Determined By</b>	SDS-PAGE under reducing conditions and visualized by Coomassie blue staining
<b>Molecular Weight</b>	30

**Protein Specifications**

<b>Format</b>	Liquid
<b>Formulation</b>	Supplied as a 0.45 µm filtered solution in 50 mM Na <sub>2</sub> HPO <sub>4</sub> (pH 7.4), 0.5 M NaCl, 250 mM imidazole, 6 M urea.
<b>Concentration</b>	Lot specific (see the label on the vial), determined by Bio-Rad protein assay dye reagent concentrate.
<b>Preservative</b>	None

SDS-PAGE Image



## Shipping

Ice packs

## Storage/Stability

Upon arrival, the protein may be stored for 2 weeks at 4 °C. For long term storage, it is recommended to store at -20 °C or -80 °C in appropriate aliquots. Avoid repeated freeze-thaw cycles.

This product is furnished for **LABORATORY RESEARCH USE ONLY**.

Not for diagnostic or therapeutic use.